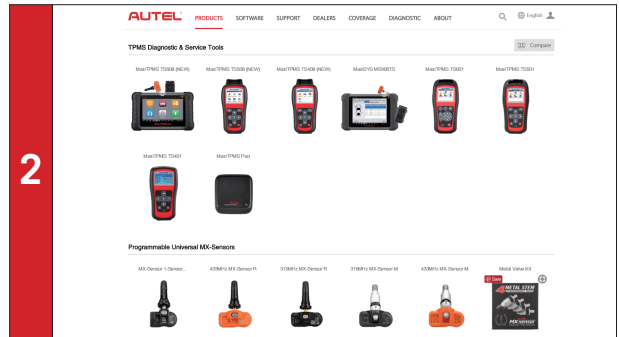
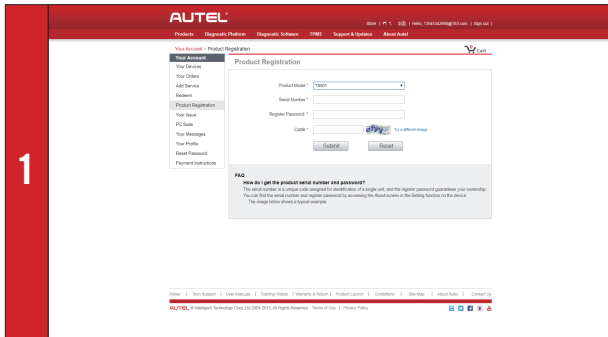
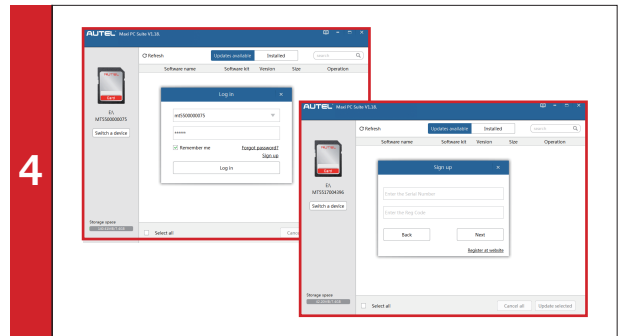
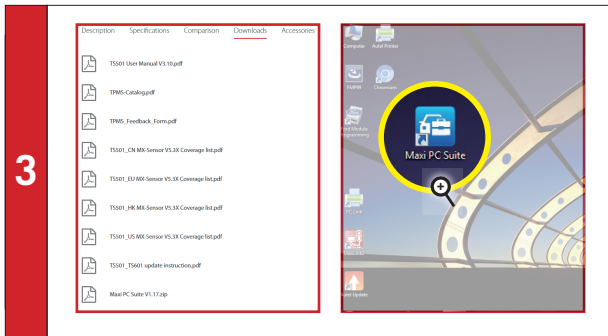


**Please Note:** The following instructions are compatible with Mac and Windows-based computers with a functional Internet connect. Please ensure your Internet is working properly before you proceed.



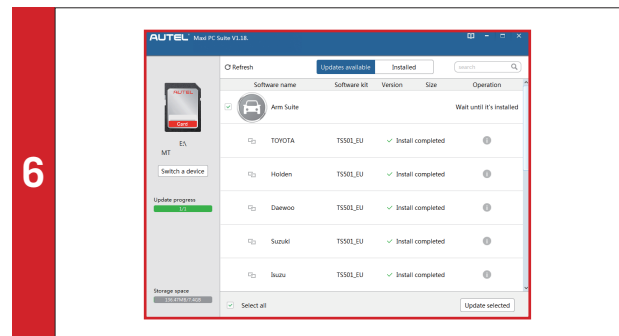
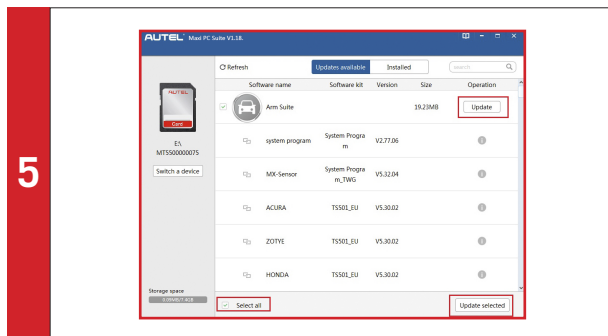
- Please visit our website [www.autel.com](http://www.autel.com) to register an **Autel ID**.
- Sign in to <http://pro.auteltech.com>. Click on **Product Registration** and select your tool to register from the drop-down menu. Enter the tool's **Serial Number** and **Password**. Turn on your tool, select **Setting** on the Main Menu, then **About**, the Serial Number and Password are listed there.
- Or you can register your tool by clicking on **Sign Up** in the **Maxi PC Suite** Log in popup window, more details in step 4.

- Log in our website [www.maxiptms.com](http://www.maxiptms.com).
- Select **Products** from the navigation menu, click on either **TS501** or **TS601** depending on what tool you're updating.



- Click **Downloads** on the tool page.
- Scroll to the bottom of the list and select the latest version of **Maxi PC Suite**. The program will download to your PC.
- Once downloaded and installed, the **Maxi PC Suite** icon will display on the desktop.

- Insert the SD card from the tool into your PC.
- Run the **Maxi PC Suite**, enter your Autel ID and Password. If you have registered before, enter information required, the **Maxi PC Suite** will turn to the Update Menu.
- To register your tool on the **Maxi PC Suite** Log in window, click on **Sign up**, enter the **Serial Number** and **Registration Password**, and proceed as information displayed. The Maxi PC Suite will turn to the Log in interface once you sign up successfully.



- In the Update window, click on **Update** or **Update selected** to initiate software download. All the available update software will be updated automatically. **Select all** in the bottom left corner is selected by default and cannot be canceled.
- Wait for all updates to complete. The update process can be monitored on the display. Programs are installed automatically and will replace the older version.

- When update completes, the progress bar on the left becomes all green.
- Eject the SD card and place it back in the tool after finishing update.